

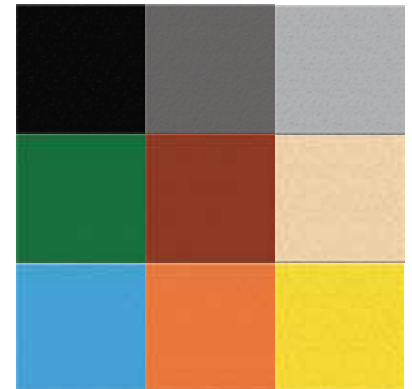
FLEX DURACOTE

Non-Slip Sealer & Topcoat



FlexDuraCote is a high solids, water based, tough and durable coating specifically designed to provide a colorized, anti-slip surface to indoor and outdoor areas such as patios, pool decks, driveways, sports arenas, malls, ramps, walkways, manufacturing floors, warehouses, loading docks, etc. exposed to rain, liquids, oil, grease and other slippery contaminants. **FlexDuraCote** is an eco-bio friendly coating, free of fumes and odors and does not contain ingredients considered hazardous to humans, animals or the environment. It is an ideal solution for a wide range of residential, commercial and industrial surfaces and is designed to provide aesthetic value while preventing injury, loss of productivity and legal damages.

FlexDuraCote has high tensile strength and abrasion resistance along with long term weatherability to provide years of useful service. **FlexDuraCote's** color stability and wear and tear resistance are driven by a proprietary polymer and extender matrix along with high end pigments. It will adhere to practically any substrate and forms a tenacious bond that will resist delamination. It can also be applied over asphaltic surfaces such as driveways for a unique aesthetic look while providing the safety features described above. When applied to outdoor surfaces **FlexDuraCote** will remain cool enough to walk barefoot even on hot days. It is available in the limited range of standard colors shown below and can also be ordered in special colors on a custom order basis.



COATING FEATURES:

- Water based single component
- Easy to apply with single coat application
- Adheres to all types of materials and surfaces
- Rapid dry times with ambient temp. of 77°F
- Can be touched up or repaired easily
- Available in multiple colors
- Tolerates foot & vehicle traffic
- Waterproof & soil resistant
- Can be pressure washed
- Durable anti-slip surface

RECOMMENDED SURFACES:

PATIOS, POOL DECKS, DRIVEWAYS, SPORTS ARENAS, MALLS, RAMPS, WALKWAYS, MANUFACTURING FLOORS, WAREHOUSES, LOADING DOCKS, MARINE DOCKS, CONCRETE DECKING, ETC.

FLEX DURACOTE

Non-Slip Sealer & Topcoat



SURFACE PREPARATION:

For best long term results, careful surface preparation is of the utmost importance. Unlike solvent based coatings, water based coatings cannot dissolve and penetrate oil and grease and thus they will not bond properly in the presence of such contaminants. Debris and surface dirt will distort the coating profile. Prior to application of **FlexDuraCote**, the target surface should be cleared of any such materials with a thorough cleaning. When application is over surfaces that have a prior coating or paint, pressure washing these surfaces is highly recommended to remove loose and deteriorating material which may inhibit proper bonding.

PREPARING FlexDuraCote FOR APPLICATION:

Mix the contents of the container thoroughly making sure all settled material is fully redispersed into the liquid emulsion and you have a consistent texture. Stir the container from time to time as you proceed with the application. Prior to opening a 5 gallon pail, carefully roll the pail end-over-end to get the settled aggregate off the bottom and moving through out the solution. A sturdy mixing stick will prove helpful. Mask off surfaces that are not designated for coating. Work in small manageable areas for time and coverage efficiency. *A wet towel over the container in use will prevent the material from skinning over and reduce evaporation.*

APPLICATION PROCEDURES:

FlexDuraCote has a soft, viscous consistency and is best applied with a foam roller, narrow, stiff bristle broom or a squeegee. Be sure there is no precipitation in the forecast for at least 24 hours. Pour the material at a strategic point on the surface and spread it evenly across the surface treating no more than 25 square feet at a time. Make sure the surface and ambient temperatures are cool enough, preferably early morning or evening hours, to permit easy spreading. Avoid working with the sun overhead or temperatures above 90°F. **FlexDuraCote** is designed to provide adequate coverage with a single coat. If more than one coat is desired, make sure that the first coat is sufficiently dry before applying the second coat. After overnight drying the coated surface will be ready to accept foot traffic. A minimum of 24 hour cure time is necessary prior to subjecting **FlexDuraCote** to vehicular traffic. The curing process will continue over a 48 to 72 hour period at which time it will achieve its optimal properties. Do not apply at temperatures below 50°F or above 90°F. Postpone the application if rain or heavy dew is imminent. Avoid heavy buildup, puddling, and overlapping.

COVERAGE:

FlexDuraCote is designed to be used as supplied and should not be thinned or mixed with other materials. Coverage per gallon will be dependent on the porosity of the target surface and the ultimate dry film thickness desired. In general, **FlexDuraCote** should yield on average about 125 to 150 square feet per gallon. **FlexDuraCote** will easily fill small cracks and deformations to provide a smooth contiguous surface. For wide cracks, deep holes, etc. it is best to repair with a patching compound suitable for the intended surface prior to the application of **FlexDuraCote**.

CLEANUP:

Clean spills, splatters and tools immediately with clean water as the dried coating is difficult to remove. If the application is via spraying, flush spray equipment with sufficient amount of clean water to prevent any residue of **FlexDuraCote** staying in the system or clogging up the mechanism.