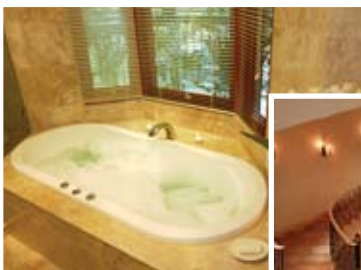
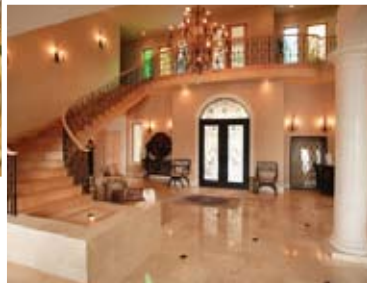




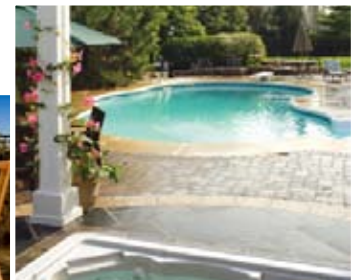
SkidGard is a high solids water based coating that dries crystal clear and creates an anti-skid and glossy finished surface. **SkidGard** is designed specifically to provide a non-slip surface eliminating the need for unsightly non-skid strips, surface etchings, rubber mats, etc. With practically invisible **SkidGard**, non-skid surfaces can be created where ever needed, instantaneously by simply brushing or rolling on **SkidGard**. It is composed of a tough and durable clear coating that creates a lasting bond with practically any surface. **SkidGard** will not be damaged by most everyday liquids including detergents and mildly corrosive cleaners. It also provides a protective barrier against stains, spills and wear. The non-skid component in **SkidGard** is an inert and rigid industrial resin used in demanding environments such as factories and warehouses. **SkidGard Plus** imparts a coarser surface texture for areas that need a higher level of skid resistance. **SkidGard** is enhanced with additives that provide ultraviolet protection and prevent growth of mold and mildew.



SkidGard
(equal to 100 grit)



SkidGard Plus
(equal to 60 grit)



SkidGard is available in two formulas to facilitate different degrees of slip protection. **SkidGard** has a coarseness equal to 100 grit sand paper, approximately 150 micron particle size. **SkidGard Plus** provides a more rugged texture similar to 60 grit sand paper at 300 micron. **SkidGard** can be applied to almost any material including ceramics, fiberglass, glass, granite, marble, metal, plastic, porcelain, slate and wood. Some of the areas that can greatly benefit from the application of **SkidGard** include bathtubs and shower stalls, boats, yachts and cruise ships, marine environments, pool and patio areas, staircases, stairwells and ramps.

Custom Finishes: **SkidGard** can also be special ordered in satin or flat finishes, transparent or solid colors and specialty colors such as safety yellow, orange and marine blue.

Application: **SkidGard** may be applied by brush, roller (short nap) or low pressure airless spray. A gallon of **SkidGard** can provide protection over approximately 350 square feet depending on the nature of the surface. Stir or shake the **SkidGard** container vigorously to mix well prior to use. The targeted surface should be free of dirt, debris and oil or grease, prior to application. The coating goes on easily and dries to a clear glossy finish. One coat is usually sufficient. However if a second is desired, allow the first coat to dry thoroughly for an hour or more depending on ambient temperature. Allow 24 hours or more for full cure before subjecting the surface to heavy traffic. Do not apply at temperatures below 50°F or above 90°F. Avoid heavy buildup, puddling and overlapping of **SkidGard**.

Cleanup: Appropriately mask off areas that need to be kept free of **SkidGard**. Wipe off overruns, spills and splatters immediately with water. Thoroughly clean hands and tools after use with soap and warm water. Observe all personal precautions as you would with any other paint or coating product.